



THE CITY OF WINNIPEG

**WATER AND WASTE DEPARTMENT
ENGINEERING DIVISION**

TENDER NO. 839-2025 ARMSTRONG DETAILED DESIGN AND CONTRACT ADMINISTRATION TRAFFIC MANAGEMENT PLAN

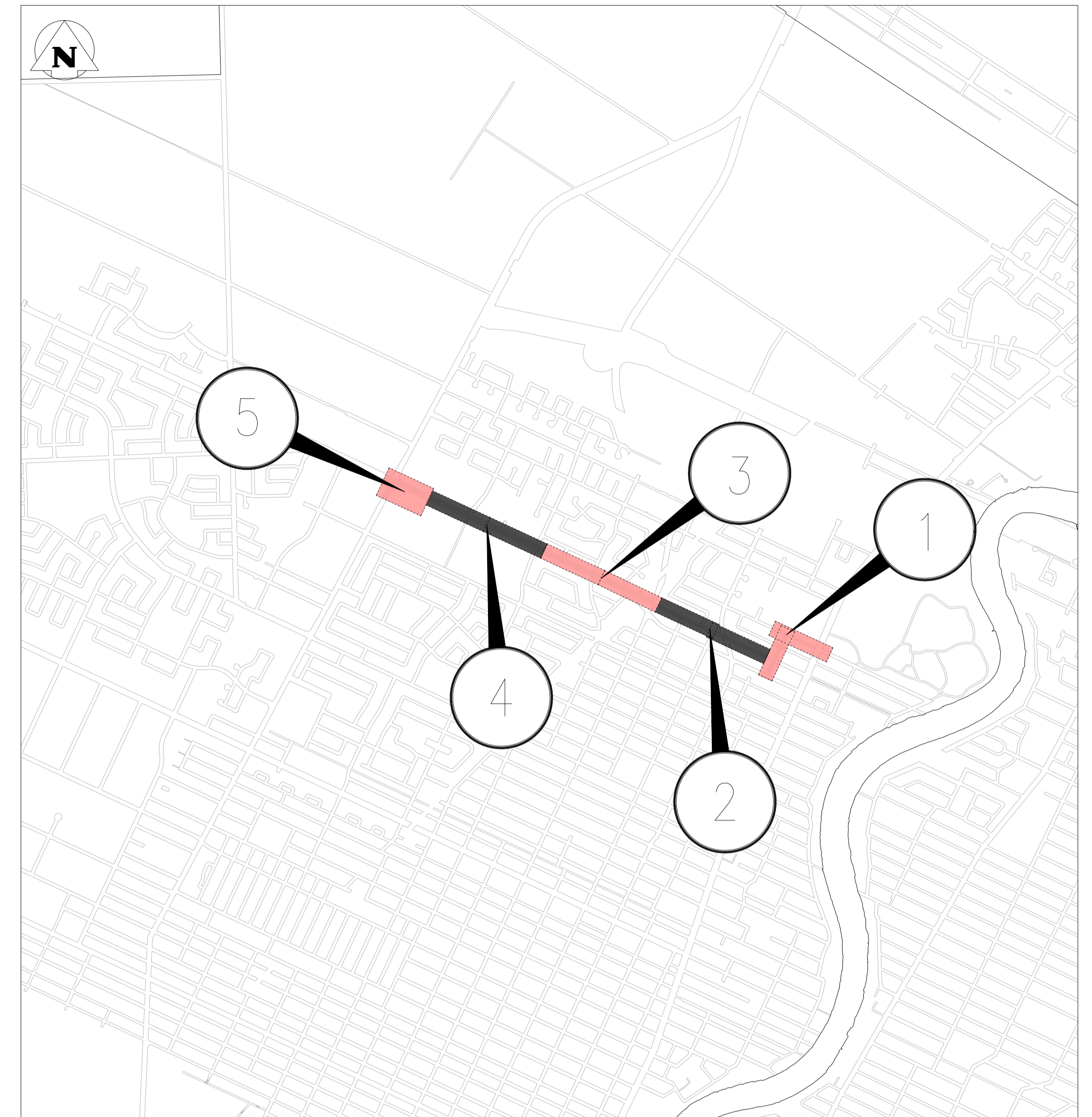
CONTRACT 1

TRAFFIC MANAGEMENT PLAN INDEX

CONSULTANT FIGURE #	SHEET #	LOCATION #	TITLE
F-0000	1		MAP & LEGEND
F-0101	2	1	ARMSTRONG AVENUE AND AIKINS STREET
F-0102	3	2	LEILA AVENUE
F-0103	4	3	LEILA AVENUE
F-0104	5	4	LEILA AVENUE
F-0105	6	5	LEILA AVENUE AND MCPHILLIPS STREET

GENERAL NOTES:

- ALL TEMPORARY TRAFFIC CONTROL TO BE IN ACCORDANCE WITH THE LATEST MANUAL OF TEMPORARY TRAFFIC CONTROL ON CITY STREETS (MTTC) AT TENDER.
- PERFORM WORK IN PHASES & STAGES TO MINIMIZE IMPACT TO TRAFFIC FLOW AND ACCESS TO RESIDENCES.
- LOCATION OF SIGNAGE, PYLONS, BARRIERS, & BARRELS TO BE PLACED & MAINTAINED IN ACCORDANCE WITH THE MTTC. WHERE THESE ARE SHOWN IN THE TMP, THEY ARE JUST FOR ILLUSTRATION & ARE NOT REPRESENTATIVE OF ACTUAL LOCATION, QUANTITIES OR DIMENSIONS.
- NOT ALL REQUIRED SIGNAGE IS SHOWN FOR EACH FIGURE. ADDITIONAL SIGNAGE TO BE PROVIDED IN ACCORDANCE WITH THE MTTC.
- CONTRACTOR TO MAINTAIN LOCAL ACCESS TO RESIDENTS AND BUSINESSES.
- THE POSTED SPEED LIMIT FOR EACH ROAD SHALL BE USED FOR ALL TAPER LENGTHS AND OTHER CRITERIA IN THE MTTC.
- CONTRACTOR SHALL SUBMIT THE PEDESTRIAN ACCESSIBILITY PLAN FOR REVIEW & ACCEPTANCE BY THE CONTRACT ADMINISTRATOR.
- CONTRACTOR TO NOTIFY CONTRACT ADMINISTRATOR A MINIMUM OF TWO (2) WEEKS PRIOR TO LANE CLOSURES TO ALLOW FOR COORDINATION WITH TRAFFIC SIGNALS, TRAFFIC MANAGEMENT, & WINNIPEG TRANSIT TO RELOCATE BUS STOPS/ROUTES.
- CONTRACTOR SHALL BE RESPONSIBLE FOR ALL PERMITS, THE SUPPLY, PLACEMENT & MAINTENANCE OF ALL TEMPORARY TRAFFIC CONTROL SIGNAGE IN ACCORDANCE WITH THE MTTC AND THE TENDER.
- ALL LANE CLOSURE REQUESTS MUST BE SUBMITTED THROUGH THE CONTRACT ADMINISTRATOR & ARE SUBJECT TO THE APPROVAL OF THE TRAFFIC MANAGEMENT BRANCH.
- CONTRACTOR TO PROVIDE FLAG PERSONS IN ACCORDANCE WITH THE MTTC WHEN MOVING MATERIALS OR EQUIPMENT INTO OR OUT OF TRAFFIC. ALL LOCATES AND EXISTING UTILITIES TO BE CONFIRMED PRIOR TO REMOVAL OF ANY ROADWAY ASSET.
- CONTRACTOR SHALL PROVIDE FLAG PERSONS WHEN REQUIRED TO MINIMIZE IMPACT TO TRAFFIC.
- WHEN FLAG PERSONS ARE PRESENT, FLAG PERSON SIGNAGE MUST BE PLACED IN ACCORDANCE WITH THE MTTC.
- WHEN FLAG PERSONS ARE NOT PRESENT, THE FLAG PERSON SIGNAGE MUST BE REMOVED OR HIDDEN.
- PROVIDE TEMPORARY RAMPS & CROSSING WHERE DIRECTED BY CONTRACT ADMINISTRATOR & IN ACCORDANCE WITH THE ACCESSIBILITY PLAN FOR PEDESTRIAN CROSSINGS WHILE PERFORMING WORK IN THE INTERSECTIONS AND APPROACHES.
- INSTALL WARNING FLAGS IN ACCORDANCE WITH MTTC 3.07.04 ON THE FIRST WARNING SIGN IN EACH LANE DROP TAPER.
- NOT ALL REQUIRED TEMPORARY TRANSIT LANDINGS ARE SHOWN. ADDITIONAL TEMPORARY TRANSIT LANDINGS MAY BE REQUIRED.
- TEMPORARY TRANSIT LANDINGS WILL BE REQUIRED FOR ANY TEMPORARY TRANSIT STOP RELOCATIONS IN ACCORDANCE WITH THE MTTC.
- CONTRACTOR TO MONITOR & MAINTAIN THE TEMPORARY SIGNAGE FOR THE DURATION OF THE PROJECT & MODIFY AS NEEDED FOR EACH STAGE OF THE WORKS.
- CONTRACTOR TO REMEDY ANY SIGNAGE DEEMED INSUFFICIENT OR INCORRECT AS DIRECTED BY THE CONTRACT ADMINISTRATOR OR TRAFFIC MANAGEMENT.
- STAGE SIDEWALK WORK SUCH THAT PEDESTRIAN ACCESS IS MAINTAINED ALONG ONE SIDE OF EACH ROADWAY AT ALL TIMES.
- CONTRACTOR TO PROVIDE ADVANCED CONSTRUCTION & SIDEWALK CLOSED/DETOUR SIGNAGE IN ACCORDANCE WITH THE MTTC. (IF REQUIRED)
- CONTRACTOR TO PROVIDE PHASING AND STAGING PLAN TO ENGINEER FOR REVIEW PRIOR TO CONSTRUCTION. NOTE THAT ADDITIONAL SUB PHASES MAY BE REQUIRED
- CONTRACTOR TO ALWAYS MAINTAIN 1 LANE OF TRAFFIC PER DIRECTION OPEN ON LEILA AVE.



SITE LOCATION PLAN
SCALE: NTS

TENDER NO. 839-2025

PRELIMINARY
NOT TO BE USED FOR CONSTRUCTION

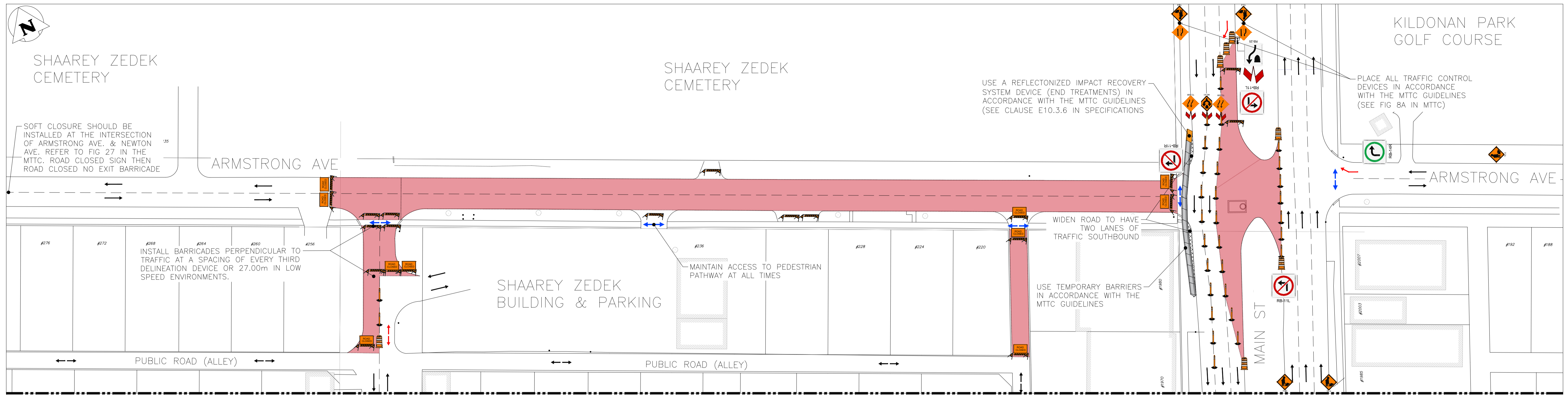
REV	NO.	REVISIONS	DATE	BY
REV B	1	ISSUED FOR REVIEW	2026/03/27	OYY
REV A	1	ISSUED FOR REVIEW	2025/11/02	OYY

THE CITY OF WINNIPEG
 WATER AND WASTE DEPARTMENT
 ENGINEERING DIVISION

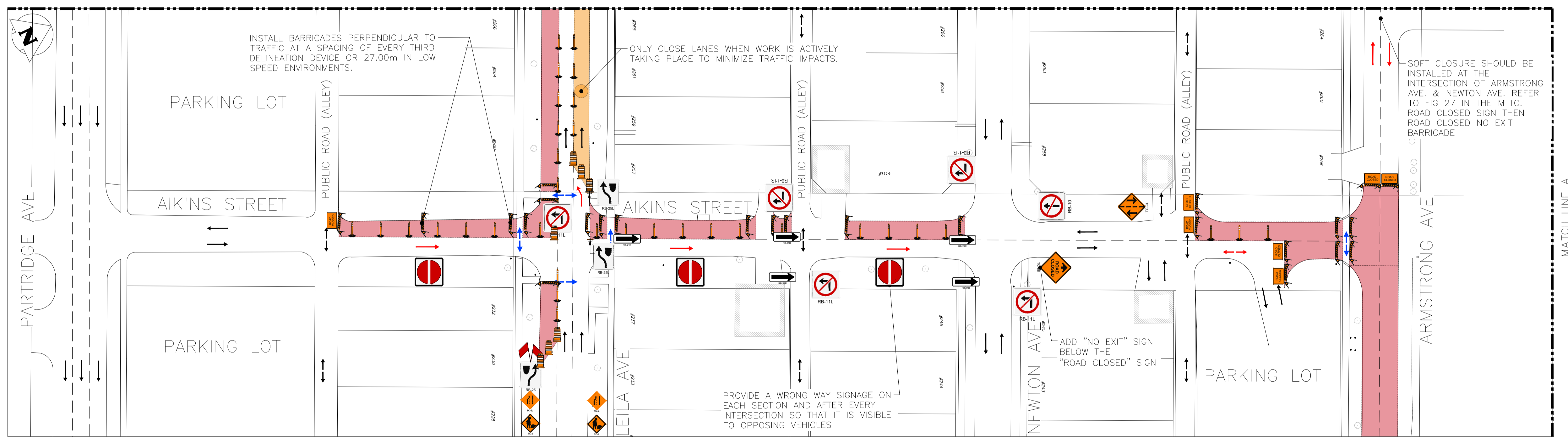
PROJECT TITLE
**ARMSTRONG DETAILED DESIGN AND
CONTRACT ADMINISTRATION**

SHEET **01** OF **06**
 COMPUTER FILE NAME
 TRAFFIC MANAGEMENT PLAN:
 MAP & LEGEND

FIGURE
F-0000



MATCH LINE A (SEE BELOW)
MATCH LINE B (SEE FIG F-0102)



TRAFFIC MANAGEMENT PLAN: ARMSTRONG AVENUE & AIKINS STREET

SCALE: 1:500

WARNING

IF POWER EQUIPMENT OR EXPLOSIVES ARE TO BE USED FOR EXCAVATION ON THIS PROJECT THE CONTRACTOR MUST:

- 1) NOTIFY THE GAS COMPANY OF THE PROPOSED LOCATION OF EXCAVATION.
- 2) TAKE PRECAUTION TO AVOID DAMAGE TO GAS COMPANY INSTALLATIONS.

SEE PROVINCIAL REGULATION 210/72 FOR DETAILS

PROPERTY LIMITS DELINEATION

DELINEATION OF PROPERTY LIMITS AS SHOWN ON THIS DWG DOES NOT REPRESENT A "LEGAL SURVEY". KGS GROUP MAKES NO REPRESENTATION OR WARRANTY AS TO THE ACCURACY OF PROPERTY LIMITS DELINEATED ON THIS DWG, NOR ON THE DIMENSIONAL ACCURACY OF DWG FEATURES RELATIVE TO THOSE PROPERTY LIMITS.

METRIC

WHOLE NUMBERS INDICATE MILLIMETERS
DECIMALIZED NUMBERS INDICATE METERS

NOTES:

1. ALL TRAFFIC CONTROL DEVICES SHOWN ON THIS SET OF DRAWINGS ARE FOR ILLUSTRATION PURPOSES ONLY. ALL TRAFFIC CONTROL DEVICES & LANE CLOSURES SHALL BE IN ACCORDANCE WITH CITY OF WINNIPEG MANUAL OF TEMPORARY TRAFFIC CONTROL (MTTC).
2. PERMANENT POSTED SPEED LIMIT ON EACH ROADWAY SHALL BE USED IN ACCORDANCE WITH THE MTTCC TO DETERMINE REQUIRED DIMENSIONS FOR TRAFFIC CONTROL.
3. CONTRACTOR TO MAINTAIN LOCAL ACCESS TO RESIDENTS AND BUSINESSES.
4. CONTRACTOR CANNOT CLOSE MORE THAN ONE APPROACH AT A TIME.
5. CONTRACTOR TO NOTIFY CONTRACT ADMINISTRATOR A MINIMUM OF TWO (2) WEEKS PRIOR TO LANE CLOSURES.
6. CONTRACTOR IS RESPONSIBLE FOR COORDINATING WITH TRAFFIC SIGNALS, TRAFFIC MANAGEMENT, & WINNIPEG TRANSIT TO RELOCATE BUS STOPS/ROUTES.
7. CONTRACTOR IS RESPONSIBLE FOR SETTING UP AND MAINTAINING LANE CLOSURES, PROVISION & MAINTENANCE OF ALL TRAFFIC SIGNAGE INCLUDING REGULATORY SIGNAGE.
8. ALL LOCATES AND EXISTING UTILITIES TO BE CONFIRMED PRIOR TO REMOVAL OF ANY ROADWAY ASSET.
9. LOCATION OF SIGNAGE, PYLONS, BARRIERS, FLAGS & BARRELS TO BE PLACED & MAINTAINED IN ACCORDANCE WITH THE MTTCC. WHERE THESE ARE SHOWN IN THE TMP, THEY ARE JUST FOR ILLUSTRATION & ARE NOT REPRESENTATIVE OF ACTUAL LOCATION, QUANTITIES OR DIMENSIONS.
10. ADDITIONAL SUB-PHASES MAY BE REQUIRED.
11. INSTALL WARNING FLAGS IN ACCORDANCE WITH MTTCC 3.07.04 ON THE FIRST WARNING SIGN IN EACH LANE DROP TAPER.
12. CONTRACTOR TO ALWAYS MAINTAIN 1 LANE OF TRAFFIC PER DIRECTION OPEN ON LEILA AVE.
13. CONTRACTOR TO ONLY CLOSE LANES WHEN WORK IS ACTIVELY TAKING PLACE TO MINIMIZE TRAFFIC IMPACTS.

LEGEND:

- LANE CLOSURE BOUNDARY
- LANE CLOSURE
- COLLECTOR SEWERS LANE CLOSURE
- REFLECTORIZED BARRICADE
- CHANNELIZATION BARREL
- PEDESTRIANS
- TALL CONE
- TEMPORARY TRAFFIC FLOW
- NORMAL TRAFFIC FLOW

PEDESTRIAN ACCOMMODATION:
WHERE PEDESTRIANS CROSS THE WORK SITE A LOW BARRIER SHALL BE USED IN ACCORDANCE WITH THE MTTCC. AN ACCEPTABLE SOLUTION IS TO USE PYLONS IN CONJUNCTION WITH BARRIERS

UNDERGROUND STRUCTURES REMARK

LOCATION OF UNDERGROUND STRUCTURES IF SHOWN ARE BASED ON THE BEST INFORMATION AVAILABLE BUT NO GUARANTEE IS GIVEN THAT ALL EXISTING UTILITIES ARE SHOWN OR THAT THE GIVEN LOCATIONS ARE EXACT. CONFIRMATION OF EXISTENCE AND EXACT LOCATION OF ALL SERVICES MUST BE OBTAINED FROM THE INDIVIDUAL UTILITIES BEFORE PROCEEDING WITH CONSTRUCTION.

TENDER NO. 839-2025

PRELIMINARY
NOT TO BE USED FOR CONSTRUCTION

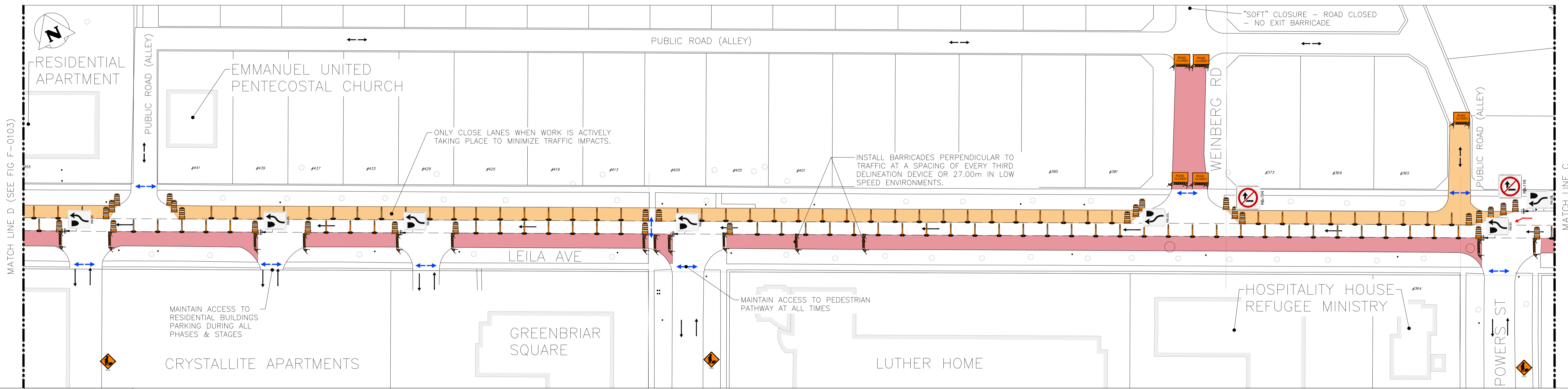
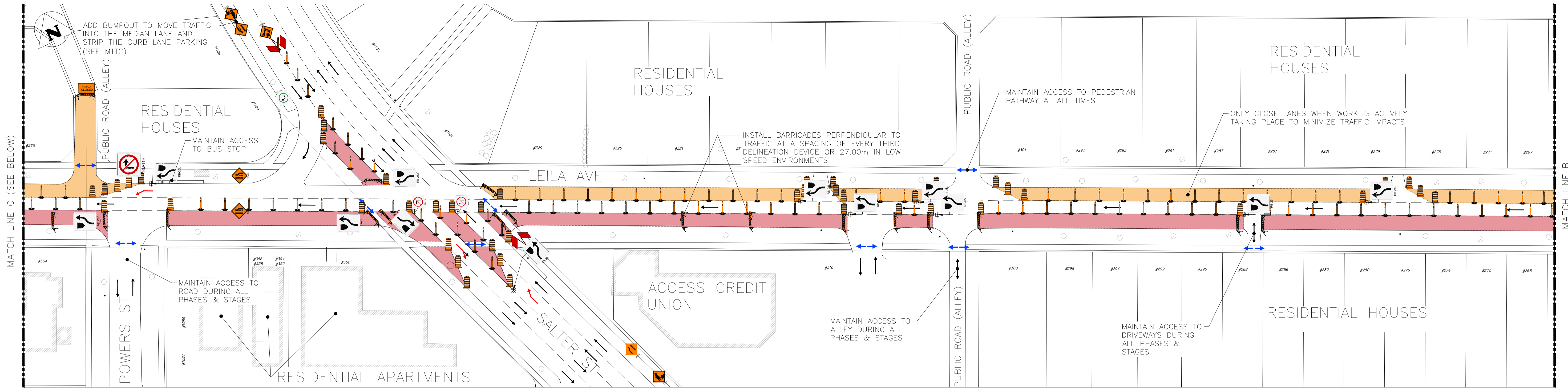
NO.	REVISIONS	DATE	BY
REV B	ISSUED FOR REVIEW	2026/03/27	OYY
REV A	ISSUED FOR REVIEW	2025/11/02	OYY

THE CITY OF WINNIPEG
WATER AND WASTE DEPARTMENT
ENGINEERING DIVISION

PROJECT TITLE
ARMSTRONG DETAILED DESIGN AND
CONTRACT ADMINISTRATION

TRAFFIC MANAGEMENT PLAN:
ARMSTRONG AVENUE & AIKINS STREET
CONTRACT 1 - MAIN ST TO MCPHILLIPS ST

SHEET OF
02 OF 06
COMPUTER FILE NAME
FIGURE
F-0101



TRAFFIC MANAGEMENT PLAN: LEILA AVENUE (WEST OF AIKINS ST. TO EAST OF MCGREGOR ST.)

SCALE: 1:500

WARNING

IF POWER EQUIPMENT OR EXPLOSIVES ARE TO BE USED FOR EXCAVATION ON THIS PROJECT THE CONTRACTOR MUST:

- 1) NOTIFY THE GAS COMPANY OF THE PROPOSED LOCATION OF EXCAVATION.
- 2) TAKE PRECAUTION TO AVOID DAMAGE TO GAS COMPANY INSTALLATIONS.

SEE PROVINCIAL REGULATION 210/72 FOR DETAILS

PROPERTY LIMITS DELINEATION

DELINEATION OF PROPERTY LIMITS AS SHOWN ON THIS DWG DOES NOT REPRESENT A "LEGAL SURVEY". KGS GROUP MAKES NO REPRESENTATION OR WARRANTY AS TO THE ACCURACY OF PROPERTY LIMITS DELINEATED ON THIS DWG, NOR ON THE DIMENSIONAL ACCURACY OF DWG FEATURES RELATIVE TO THOSE PROPERTY LIMITS.

METRIC

WHOLE NUMBERS INDICATE MILLIMETERS
DECIMALIZED NUMBERS INDICATE METERS

NOTES:

1. ALL TRAFFIC CONTROL DEVICES SHOWN ON THIS SET OF DRAWINGS ARE FOR ILLUSTRATION PURPOSES ONLY. ALL TRAFFIC CONTROL DEVICES & LANE CLOSURES SHALL BE IN ACCORDANCE WITH CITY OF WINNIPEG MANUAL OF TEMPORARY TRAFFIC CONTROL (MTTC).
2. PERMANENT POSTED SPEED LIMIT ON EACH ROADWAY SHALL BE USED IN ACCORDANCE WITH THE MTTC TO DETERMINE REQUIRED DIMENSIONS FOR TRAFFIC CONTROL.
3. CONTRACTOR TO MAINTAIN LOCAL ACCESS TO RESIDENTS AND BUSINESSES.
4. CONTRACTOR CANNOT CLOSE MORE THAN ONE APPROACH AT A TIME.
5. CONTRACTOR TO NOTIFY CONTRACT ADMINISTRATOR A MINIMUM OF TWO (2) WEEKS PRIOR TO LANE CLOSURES.
6. CONTRACTOR IS RESPONSIBLE FOR COORDINATING WITH TRAFFIC SIGNALS, TRAFFIC MANAGEMENT, & WINNIPEG TRANSIT TO RELOCATE BUS STOPS/ROUTES.
7. CONTRACTOR IS RESPONSIBLE FOR SETTING UP AND MAINTAINING LANE CLOSURES, PROVISION & MAINTENANCE OF ALL TRAFFIC SIGNAGE INCLUDING REGULATORY SIGNAGE.
8. ALL LOCATES AND EXISTING UTILITIES TO BE CONFIRMED PRIOR TO REMOVAL OF ANY ROADWAY ASSET.
9. LOCATION OF SIGNAGE, PYLONS, BARRIERS, FLAGS & BARRELS TO BE PLACED & MAINTAINED IN ACCORDANCE WITH THE MTTC. WHERE THESE ARE SHOWN IN THE TMP, THEY ARE JUST FOR ILLUSTRATION & ARE NOT REPRESENTATIVE OF ACTUAL LOCATION, QUANTITIES OR DIMENSIONS.
10. ADDITIONAL SUB-PHASES MAY BE REQUIRED.
11. INSTALL WARNING FLAGS IN ACCORDANCE WITH MTTC 3.07.04 ON THE FIRST WARNING SIGN IN EACH LANE DROP TAPER.
12. CONTRACTOR TO ALWAYS MAINTAIN 1 LANE OF TRAFFIC PER DIRECTION OPEN ON LEILA AVE.
13. CONTRACTOR TO ONLY CLOSE LANES WHEN WORK IS ACTIVELY TAKING PLACE TO MINIMIZE TRAFFIC IMPACTS.

LEGEND:

- LANE CLOSURE BOUNDARY
- LANE CLOSURE
- COLLECTOR SEWERS LANE CLOSURE
- REFLECTORIZED BARRICADE
- CHANNELIZATION BARREL
- PEDESTRIANS
- TALL CONE
- TEMPORARY TRAFFIC FLOW
- NORMAL TRAFFIC FLOW

PEDESTRIAN ACCOMMODATION:
WHERE PEDESTRIANS CROSS THE WORK SITE A LOW BARRIER SHALL BE USED IN ACCORDANCE WITH THE MTTC. AN ACCEPTABLE SOLUTION IS TO USE PYLONS IN CONJUNCTION WITH BARRIERS

UNDERGROUND STRUCTURES REMARK
LOCATION OF UNDERGROUND STRUCTURES IF SHOWN ARE BASED ON THE BEST INFORMATION AVAILABLE BUT NO GUARANTEE IS GIVEN THAT ALL EXISTING UTILITIES ARE SHOWN OR THAT THE GIVEN LOCATIONS ARE EXACT. CONFIRMATION OF EXISTENCE AND EXACT LOCATION OF ALL SERVICES MUST BE OBTAINED FROM THE INDIVIDUAL UTILITIES BEFORE PROCEEDING WITH CONSTRUCTION.

PRELIMINARY
NOT TO BE USED FOR CONSTRUCTION

REV	NO.	REVISIONS	DATE	BY
REV B	1	ISSUED FOR REVIEW	2026/03/27	0YY
REV A	1	ISSUED FOR REVIEW	2025/11/02	0YY

TENDER NO. 839-2025

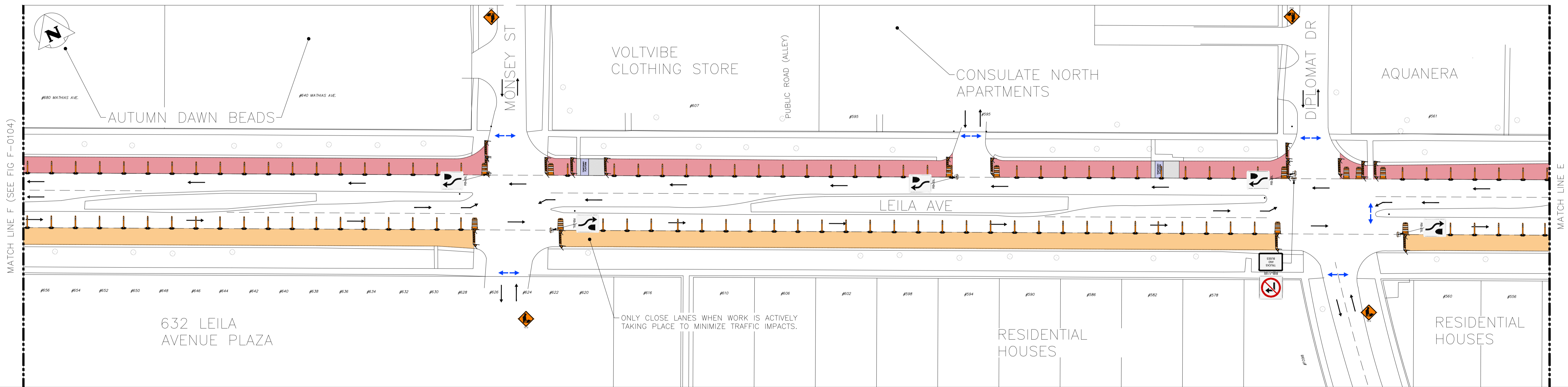
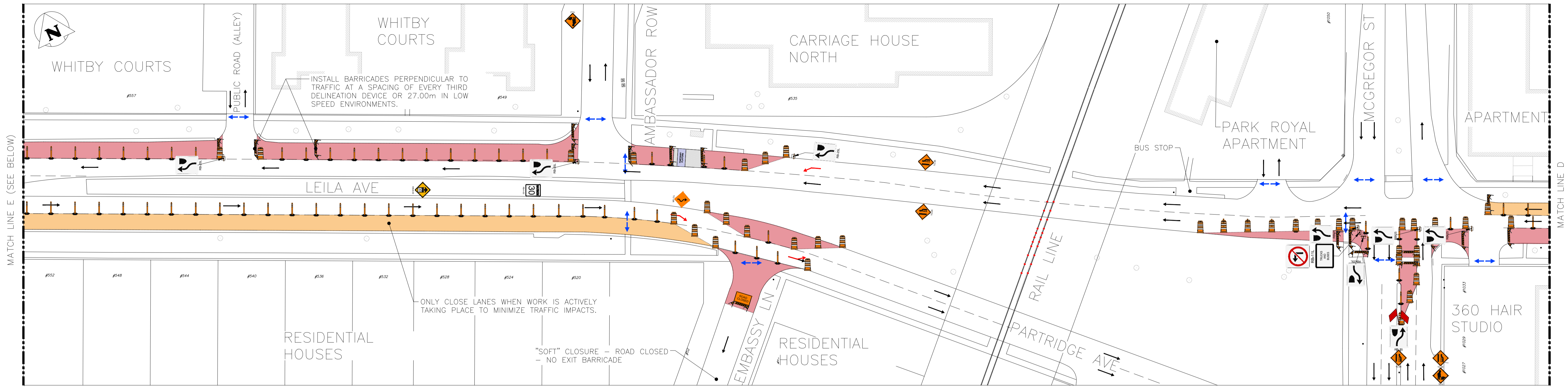
THE CITY OF WINNIPEG
WATER AND WASTE DEPARTMENT
ENGINEERING DIVISION

PROJECT TITLE
ARMSTRONG DETAILED DESIGN AND CONTRACT ADMINISTRATION TRAFFIC MANAGEMENT PLAN: LEILA AVENUE (WEST OF AIKINS ST. TO EAST OF MCGREGOR ST.)

SHEET **03** OF **06**
COMPUTER FILE NAME
FIGURE **F-0102**

CONTRACT 1 - MAIN ST TO MCPHILLIPS ST

Filepath: U:\FMS\25-0107-002\25-0107-002-TMP_C1_Main St to McPhillips - Tab F-0102_Plotting By: OYoussef 26/03/26 [Thu 5:52pm] At: C:\Users\OYoussef\Documents\Projects\25-0107-002\SCALE: 1:1



TRAFFIC MANAGEMENT PLAN: LEILA AVENUE (MCGREGOR ST. TO WEST OF SINCLAIR ST.)

SCALE: 1:500

NOTES:

- ALL TRAFFIC CONTROL DEVICES SHOWN ON THIS SET OF DRAWINGS ARE FOR ILLUSTRATION PURPOSES ONLY. ALL TRAFFIC CONTROL DEVICES & LANE CLOSURES SHALL BE IN ACCORDANCE WITH CITY OF WINNIPEG MANUAL OF TEMPORARY TRAFFIC CONTROL (MTTC).
- PERMANENT POSTED SPEED LIMIT ON EACH ROADWAY SHALL BE USED IN ACCORDANCE WITH THE MTTC TO DETERMINE REQUIRED DIMENSIONS FOR TRAFFIC CONTROL.
- CONTRACTOR TO MAINTAIN LOCAL ACCESS TO RESIDENTS AND BUSINESSES.
- CONTRACTOR CANNOT CLOSE MORE THAN ONE APPROACH AT A TIME.
- CONTRACTOR TO NOTIFY CONTRACT ADMINISTRATOR A MINIMUM OF TWO (2) WEEKS PRIOR TO LANE CLOSURES.
- CONTRACTOR IS RESPONSIBLE FOR COORDINATING WITH TRAFFIC SIGNALS, TRAFFIC MANAGEMENT, & WINNIPEG TRANSIT TO RELOCATE BUS STOPS/ROUTES.
- CONTRACTOR IS RESPONSIBLE FOR SETTING UP AND MAINTAINING LANE CLOSURES, PROVISION & MAINTENANCE OF ALL TRAFFIC SIGNAGE INCLUDING REGULATORY SIGNAGE.
- ALL LOCATES AND EXISTING UTILITIES TO BE CONFIRMED PRIOR TO REMOVAL OF ANY ROADWAY ASSET.
- LOCATION OF SIGNAGE, PYLONS, BARRIERS, FLAGS & BARRELS TO BE PLACED & MAINTAINED IN ACCORDANCE WITH THE MTTC. WHERE THESE ARE SHOWN IN THE TMP, THEY ARE JUST FOR ILLUSTRATION & ARE NOT REPRESENTATIVE OF ACTUAL LOCATION, QUANTITIES OR DIMENSIONS.
- ADDITIONAL SUB-PHASES MAY BE REQUIRED.
- INSTALL WARNING FLAGS IN ACCORDANCE WITH MTTC 3.07.04 ON THE FIRST WARNING SIGN IN EACH LANE DROP TAPER.
- CONTRACTOR TO ALWAYS MAINTAIN 1 LANE OF TRAFFIC PER DIRECTION OPEN ON LEILA AVE.
- CONTRACTOR TO ONLY CLOSE LANES WHEN WORK IS ACTIVELY TAKING PLACE TO MINIMIZE TRAFFIC IMPACTS.

LEGEND:

- LANE CLOSURE BOUNDARY
- LANE CLOSURE
- COLLECTOR SEWERS LANE CLOSURE
- REFLECTORIZED BARRICADE
- CHANNELIZATION BARREL
- PEDESTRIANS
- TALL CONE
- TEMPORARY TRAFFIC FLOW
- NORMAL TRAFFIC FLOW

PEDESTRIAN ACCOMMODATION:
WHERE PEDESTRIANS CROSS THE WORK SITE A LOW BARRIER SHALL BE USED IN ACCORDANCE WITH THE MTTC. AN ACCEPTABLE SOLUTION IS TO USE PYLONS IN CONJUNCTION WITH BARRIERS

UNDERGROUND STRUCTURES REMARK

LOCATION OF UNDERGROUND STRUCTURES IF SHOWN ARE BASED ON THE BEST INFORMATION AVAILABLE BUT NO GUARANTEE IS GIVEN THAT ALL EXISTING UTILITIES ARE SHOWN OR THAT THE GIVEN LOCATIONS ARE EXACT. CONFIRMATION OF EXISTENCE AND EXACT LOCATION OF ALL SERVICES MUST BE OBTAINED FROM THE INDIVIDUAL UTILITIES BEFORE PROCEEDING WITH CONSTRUCTION.

TENDER NO. 839-2025

WARNING

IF POWER EQUIPMENT OR EXPLOSIVES ARE TO BE USED FOR EXCAVATION ON THIS PROJECT THE CONTRACTOR MUST:

- NOTIFY THE GAS COMPANY OF THE PROPOSED LOCATION OF EXCAVATION.
- TAKE PRECAUTION TO AVOID DAMAGE TO GAS COMPANY INSTALLATIONS.

PROPERTY LIMITS DELINEATION

DELINEATION OF PROPERTY LIMITS AS SHOWN ON THIS DWG DOES NOT REPRESENT A "LEGAL SURVEY". KGS GROUP MAKES NO REPRESENTATION OR WARRANTY AS TO THE ACCURACY OF PROPERTY LIMITS DELINEATED ON THIS DWG, NOR ON THE DIMENSIONAL ACCURACY OF DWG FEATURES RELATIVE TO THOSE PROPERTY LIMITS.

METRIC

WHOLE NUMBERS INDICATE MILLIMETERS
DECIMALIZED NUMBERS INDICATE METERS

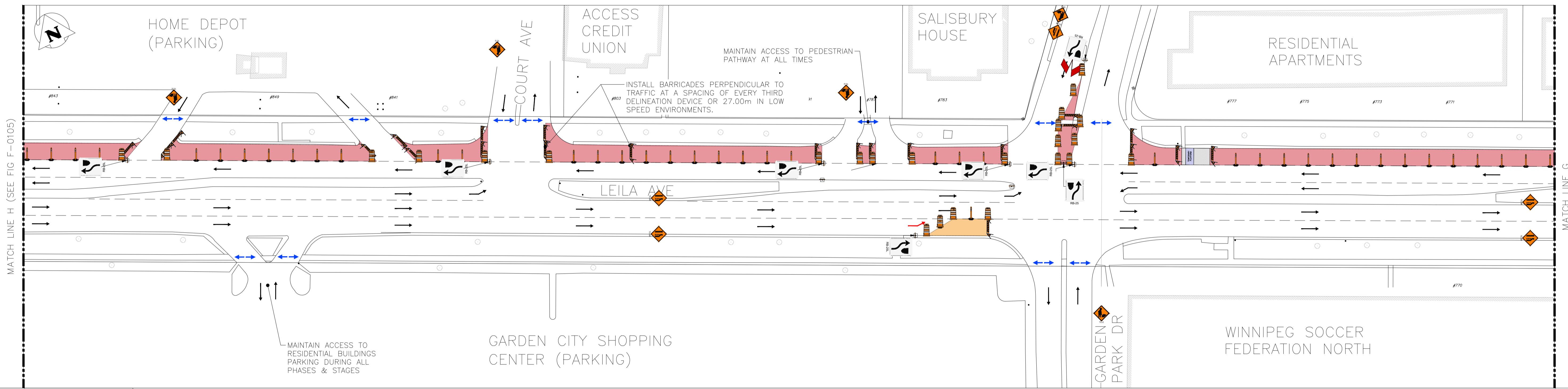
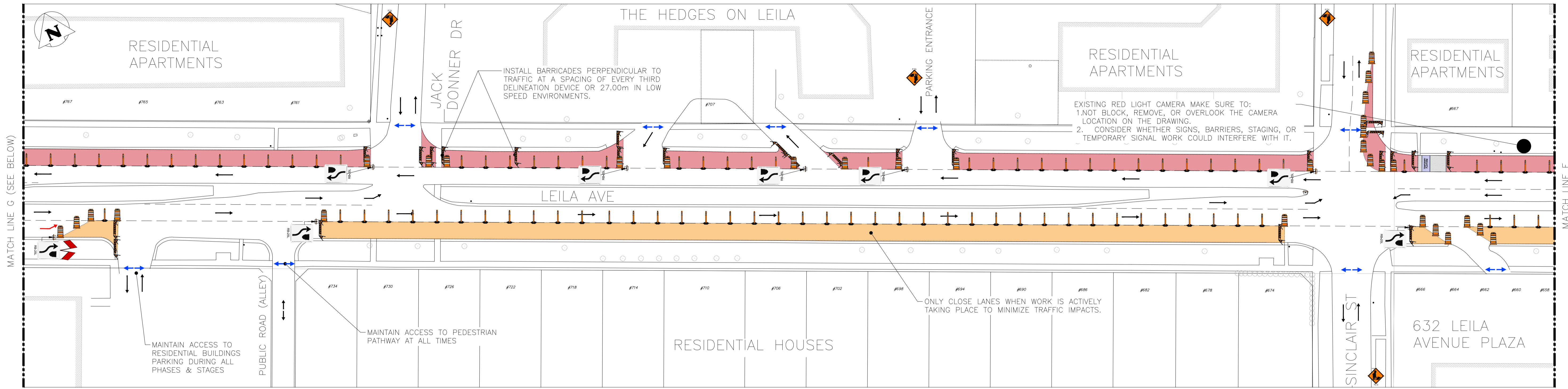
PRELIMINARY
NOT TO BE USED FOR CONSTRUCTION

NO.	REVISIONS	DATE	BY
REV B	ISSUED FOR REVIEW	2026/03/27	OYY
REV A	ISSUED FOR REVIEW	2025/11/02	OYY

THE CITY OF WINNIPEG
WATER AND WASTE DEPARTMENT
ENGINEERING DIVISION

PROJECT TITLE
ARMSTRONG DETAILED DESIGN AND CONTRACT ADMINISTRATION
TRAFFIC MANAGEMENT PLAN:
LEILA AVENUE (MCGREGOR ST. TO WEST OF SINCLAIR ST.)
CONTRACT 1 - MAIN ST TO MCPHILLIPS ST

SHEET OF
04 OF 06
COMPUTER FILE NAME
FIGURE
F-0103



TRAFFIC MANAGEMENT PLAN: LEILA AVENUE (SINCLAIR ST. TO EAST OF MCPHILLIPS)

SCALE: 1:500

WARNING

IF POWER EQUIPMENT OR EXPLOSIVES ARE TO BE USED FOR EXCAVATION ON THIS PROJECT THE CONTRACTOR MUST:

- 1) NOTIFY THE GAS COMPANY OF THE PROPOSED LOCATION OF EXCAVATION.
- 2) TAKE PRECAUTION TO AVOID DAMAGE TO GAS COMPANY INSTALLATIONS.

SEE PROVINCIAL REGULATION 210/72 FOR DETAILS

PROPERTY LIMITS DELINEATION

DELINEATION OF PROPERTY LIMITS AS SHOWN ON THIS DWG DOES NOT REPRESENT A "LEGAL SURVEY". KGS GROUP MAKES NO REPRESENTATION OR WARRANTY AS TO THE ACCURACY OF PROPERTY LIMITS DELINEATED ON THIS DWG, NOR ON THE DIMENSIONAL ACCURACY OF DWG FEATURES RELATIVE TO THOSE PROPERTY LIMITS.

METRIC

WHOLE NUMBERS INDICATE MILLIMETERS
DECIMALIZED NUMBERS INDICATE METERS

NOTES:

1. ALL TRAFFIC CONTROL DEVICES SHOWN ON THIS SET OF DRAWINGS ARE FOR ILLUSTRATION PURPOSES ONLY. ALL TRAFFIC CONTROL DEVICES & LANE CLOSURES SHALL BE IN ACCORDANCE WITH CITY OF WINNIPEG MANUAL OF TEMPORARY TRAFFIC CONTROL (MTTC).
2. PERMANENT POSTED SPEED LIMIT ON EACH ROADWAY SHALL BE USED IN ACCORDANCE WITH THE MTTC TO DETERMINE REQUIRED DIMENSIONS FOR TRAFFIC CONTROL.
3. CONTRACTOR TO MAINTAIN LOCAL ACCESS TO RESIDENTS AND BUSINESSES.
4. CONTRACTOR CANNOT CLOSE MORE THAN ONE APPROACH AT A TIME.
5. CONTRACTOR TO NOTIFY CONTRACT ADMINISTRATOR A MINIMUM OF TWO (2) WEEKS PRIOR TO LANE CLOSURES.
6. CONTRACTOR IS RESPONSIBLE FOR COORDINATING WITH TRAFFIC SIGNALS, TRAFFIC MANAGEMENT, & WINNIPEG TRANSIT TO RELOCATE BUS STOPS/ROUTES.
7. CONTRACTOR IS RESPONSIBLE FOR SETTING UP AND MAINTAINING LANE CLOSURES, PROVISION & MAINTENANCE OF ALL TRAFFIC SIGNAGE INCLUDING REGULATORY SIGNAGE.
8. ALL LOCATES AND EXISTING UTILITIES TO BE CONFIRMED PRIOR TO REMOVAL OF ANY ROADWAY ASSET.
9. LOCATION OF SIGNAGE, PYLONS, BARRIERS, FLAGS & BARRELS TO BE PLACED & MAINTAINED IN ACCORDANCE WITH THE MTTC. WHERE THESE ARE SHOWN IN THE TMP, THEY ARE JUST FOR ILLUSTRATION & ARE NOT REPRESENTATIVE OF ACTUAL LOCATION, QUANTITIES OR DIMENSIONS.
10. ADDITIONAL SUB-PHASES MAY BE REQUIRED.
11. INSTALL WARNING FLAGS IN ACCORDANCE WITH MTTC 3.07.04 ON THE FIRST WARNING SIGN IN EACH LANE DROP TAPER.
12. CONTRACTOR TO ALWAYS MAINTAIN 1 LANE OF TRAFFIC PER DIRECTION OPEN ON LEILA AVE.
13. CONTRACTOR TO ONLY CLOSE LANES WHEN WORK IS ACTIVELY TAKING PLACE TO MINIMIZE TRAFFIC IMPACTS.

LEGEND:

- LANE CLOSURE BOUNDARY
- LANE CLOSURE
- COLLECTOR SEWERS LANE CLOSURE
- REFLECTORIZED BARRICADE
- CHANNELIZATION BARREL
- PEDESTRIANS
- TALL CONE
- TEMPORARY TRAFFIC FLOW
- NORMAL TRAFFIC FLOW

PEDESTRIAN ACCOMMODATION:
WHERE PEDESTRIANS CROSS THE WORK SITE A LOW BARRIER SHALL BE USED IN ACCORDANCE WITH THE MTTC. AN ACCEPTABLE SOLUTION IS TO USE PYLONS IN CONJUNCTION WITH BARRIERS

UNDERGROUND STRUCTURES REMARK
LOCATION OF UNDERGROUND STRUCTURES IF SHOWN ARE BASED ON THE BEST INFORMATION AVAILABLE BUT NO GUARANTEE IS GIVEN THAT ALL EXISTING UTILITIES ARE SHOWN OR THAT THE GIVEN LOCATIONS ARE EXACT. CONFIRMATION OF EXISTENCE AND EXACT LOCATION OF ALL SERVICES MUST BE OBTAINED FROM THE INDIVIDUAL UTILITIES BEFORE PROCEEDING WITH CONSTRUCTION.

PRELIMINARY
NOT TO BE USED FOR CONSTRUCTION

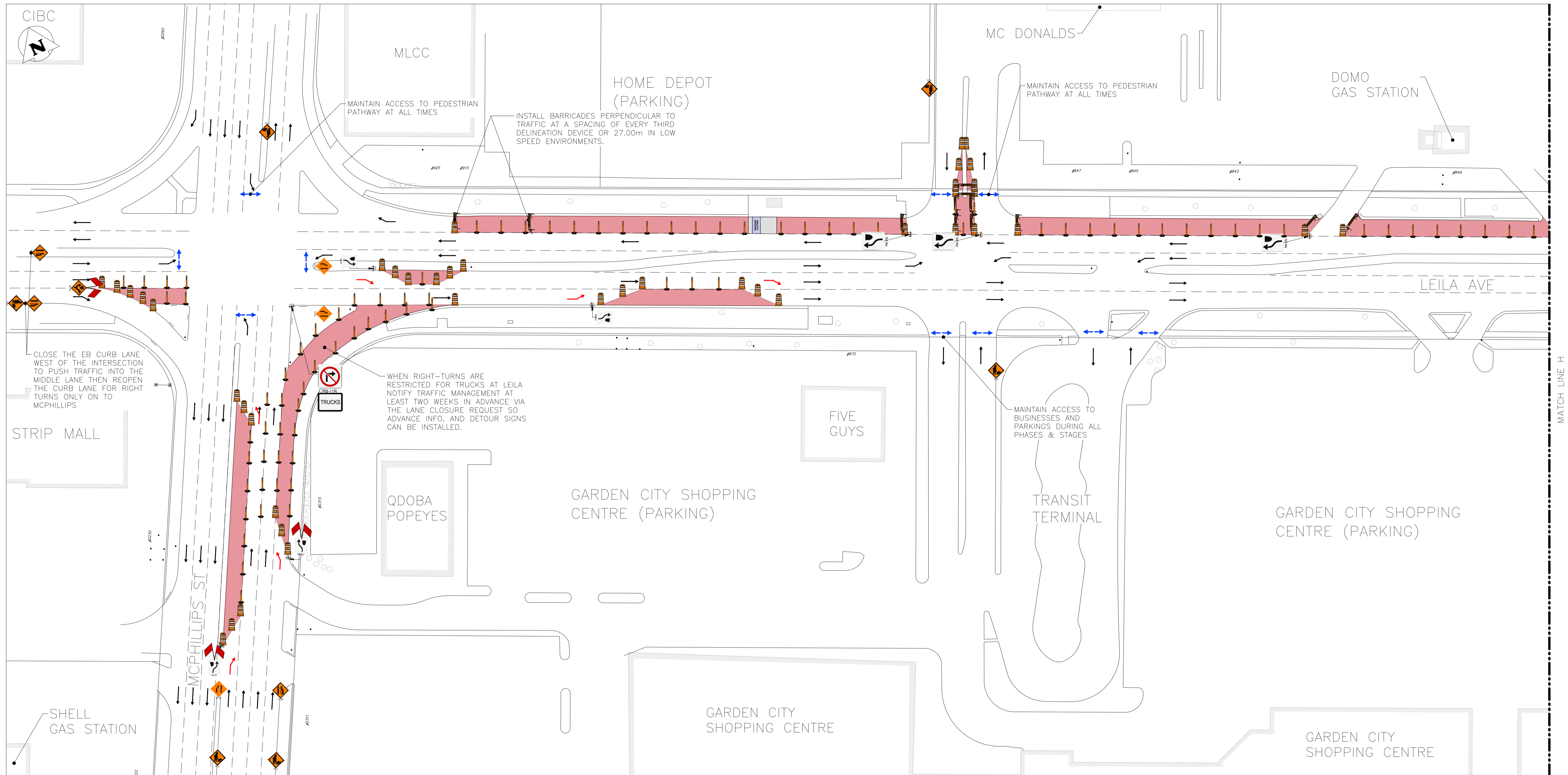
NO.	REVISIONS	DATE	BY
REV B	ISSUED FOR REVIEW	2026/03/27	OYY
REV A	ISSUED FOR REVIEW	2025/11/02	OYY

TENDER NO. 839-2025

THE CITY OF WINNIPEG
WATER AND WASTE DEPARTMENT
ENGINEERING DIVISION

PROJECT TITLE
ARMSTRONG DETAILED DESIGN AND CONTRACT ADMINISTRATION
TRAFFIC MANAGEMENT PLAN:
LEILA AVENUE(SINCLAIR ST. TO EAST OF MCPHILLIPS)
CONTRACT 1 - MAIN ST TO MCPHILLIPS ST

SHEET 05 OF 06
COMPUTER FILE NAME
FIGURE F-0104



Filepath: U:\FMS\25-0107-002\25-0107-002_TMP_C1_Main St to McPhillips - Tab\F-0105 Plotted By: OYoussef 26/03/26 [Thu 5:54pm]
 At: C:\Users\OYoussef\OneDrive\Desktop\25-0107-002\25-0107-002_TMP_C1_Main St to McPhillips - Tab\F-0105 Plotted By: OYoussef 26/03/26 [Thu 5:54pm]

TRAFFIC MANAGEMENT PLAN: LEILA AVENUE & MCPHILLIPS STREET

SCALE: 1:500

WARNING

IF POWER EQUIPMENT OR EXPLOSIVES ARE TO BE USED FOR EXCAVATION ON THIS PROJECT THE CONTRACTOR MUST:

- 1) NOTIFY THE GAS COMPANY OF THE PROPOSED LOCATION OF EXCAVATION.
- 2) TAKE PRECAUTION TO AVOID DAMAGE TO GAS COMPANY INSTALLATIONS.

SEE PROVINCIAL REGULATION 210/72 FOR DETAILS

PROPERTY LIMITS DELINEATION

DELINEATION OF PROPERTY LIMITS AS SHOWN ON THIS DWG DOES NOT REPRESENT A "LEGAL SURVEY". KGS GROUP MAKES NO REPRESENTATION OR WARRANTY AS TO THE ACCURACY OF PROPERTY LIMITS DELINEATED ON THIS DWG, NOR ON THE DIMENSIONAL ACCURACY OF DWG FEATURES RELATIVE TO THOSE PROPERTY LIMITS.

METRIC

WHOLE NUMBERS INDICATE MILLIMETERS
DECIMALIZED NUMBERS INDICATE METERS

NOTES:

1. ALL TRAFFIC CONTROL DEVICES SHOWN ON THIS SET OF DRAWINGS ARE FOR ILLUSTRATION PURPOSES ONLY. ALL TRAFFIC CONTROL DEVICES & LANE CLOSURES SHALL BE IN ACCORDANCE WITH CITY OF WINNIPEG MANUAL OF TEMPORARY TRAFFIC CONTROL (MTTC).
2. PERMANENT POSTED SPEED LIMIT ON EACH ROADWAY SHALL BE USED IN ACCORDANCE WITH THE MTTC TO DETERMINE REQUIRED DIMENSIONS FOR TRAFFIC CONTROL.
3. CONTRACTOR TO MAINTAIN LOCAL ACCESS TO RESIDENTS AND BUSINESSES.
4. CONTRACTOR CANNOT CLOSE MORE THAN ONE APPROACH AT A TIME.
5. CONTRACTOR TO NOTIFY CONTRACT ADMINISTRATOR A MINIMUM OF TWO (2) WEEKS PRIOR TO LANE CLOSURES.
6. CONTRACTOR IS RESPONSIBLE FOR COORDINATING WITH TRAFFIC SIGNALS, TRAFFIC MANAGEMENT, & WINNIPEG TRANSIT TO RELOCATE BUS STOPS/ROUTES.
7. CONTRACTOR IS RESPONSIBLE FOR SETTING UP AND MAINTAINING LANE CLOSURES, PROVISION & MAINTENANCE OF ALL TRAFFIC SIGNAGE INCLUDING REGULATORY SIGNAGE.
8. ALL LOCATES AND EXISTING UTILITIES TO BE CONFIRMED PRIOR TO REMOVAL OF ANY ROADWAY ASSET.
9. LOCATION OF SIGNAGE, PYLONS, BARRIERS, FLAGS & BARRELS TO BE PLACED & MAINTAINED IN ACCORDANCE WITH THE MTTC. WHERE THESE ARE SHOWN IN THE TMP, THEY ARE JUST FOR ILLUSTRATION & ARE NOT REPRESENTATIVE OF ACTUAL LOCATION, QUANTITIES OR DIMENSIONS.
10. ADDITIONAL SUB-PHASES MAY BE REQUIRED.
11. INSTALL WARNING FLAGS IN ACCORDANCE WITH MTTC 3.07.04 ON THE FIRST WARNING SIGN IN EACH LANE DROP TAPER.
12. CONTRACTOR TO ALWAYS MAINTAIN 1 LANE OF TRAFFIC PER DIRECTION OPEN ON LEILA AVE.
13. CONTRACTOR TO ONLY CLOSE LANES WHEN WORK IS ACTIVELY TAKING PLACE TO MINIMIZE TRAFFIC IMPACTS.

LEGEND:

- LANE CLOSURE BOUNDARY
- LANE CLOSURE
- COLLECTOR SEWERS LANE CLOSURE
- REFLECTORIZED BARRICADE
- CHANNELIZATION BARREL
- PEDESTRIANS
- TALL CONE
- TEMPORARY TRAFFIC FLOW
- NORMAL TRAFFIC FLOW

PEDESTRIAN ACCOMMODATION:
WHERE PEDESTRIANS CROSS THE WORK SITE A LOW BARRIER SHALL BE USED IN ACCORDANCE WITH THE MTTC. AN ACCEPTABLE SOLUTION IS TO USE PYLONS IN CONJUNCTION WITH BARRIERS

UNDERGROUND STRUCTURES REMARK

LOCATION OF UNDERGROUND STRUCTURES IF SHOWN ARE BASED ON THE BEST INFORMATION AVAILABLE BUT NO GUARANTEE IS GIVEN THAT ALL EXISTING UTILITIES ARE SHOWN OR THAT THE GIVEN LOCATIONS ARE EXACT. CONFIRMATION OF EXISTENCE AND EXACT LOCATION OF ALL SERVICES MUST BE OBTAINED FROM THE INDIVIDUAL UTILITIES BEFORE PROCEEDING WITH CONSTRUCTION.

TENDER NO. 839-2025

PRELIMINARY
NOT TO BE USED FOR CONSTRUCTION

NO.	REVISIONS	DATE	BY
REV B	ISSUED FOR REVIEW	2026/03/27	OYY
REV A	ISSUED FOR REVIEW	2025/11/02	OYY

THE CITY OF WINNIPEG
WATER AND WASTE DEPARTMENT
Winnipeg ENGINEERING DIVISION

PROJECT TITLE
ARMSTRONG DETAILED DESIGN AND CONTRACT ADMINISTRATION

TRAFFIC MANAGEMENT PLAN:
LEILA AVENUE & MCPHILLIPS STREET
CONTRACT 1 - MAIN ST TO MCPHILLIPS ST

SHEET	OF
06	06
COMPUTER FILE NAME	
FIGURE	
F-0105	